

## Who may apply?

Any individual or private business that operates a grazing farm bordering a live stream, wetland or Chesapeake Bay Preservation Act Resource Protection Area is eligible to apply for 100 percent reimbursement on the installation of a livestock stream-exclusion system. To receive reimbursement, landowners must have a Virginia Agricultural Best Management Practices Cost-Share program (VACS) contract for Stream Exclusion with Grazing Land Management (SL-6, or SL-6T) approved by the local Soil and Water Conservation District.

## How to apply

Contact your local Soil and Water Conservation District. District staff can assist you in applying for this reimbursement. Visit [www.vaswcd.org](http://www.vaswcd.org) to locate the nearest district office.

The Virginia Agricultural Best Management Practices Cost-Share Program is managed by the Virginia Department of Conservation and Recreation and implemented by local Soil and Water Conservation Districts.



# Virginia Livestock Exclusion System

*Invest for Better Profits and Water Quality*



Some photos courtesy of John Marshall and Thomas Jefferson soil and water conservation districts.

DCR programs, activities and employment opportunities are available to all people regardless of race, color, religion, sex, age, national origin or political affiliation. DCR is an equal opportunity employer.

9/12/2013





# A unique cost-share opportunity

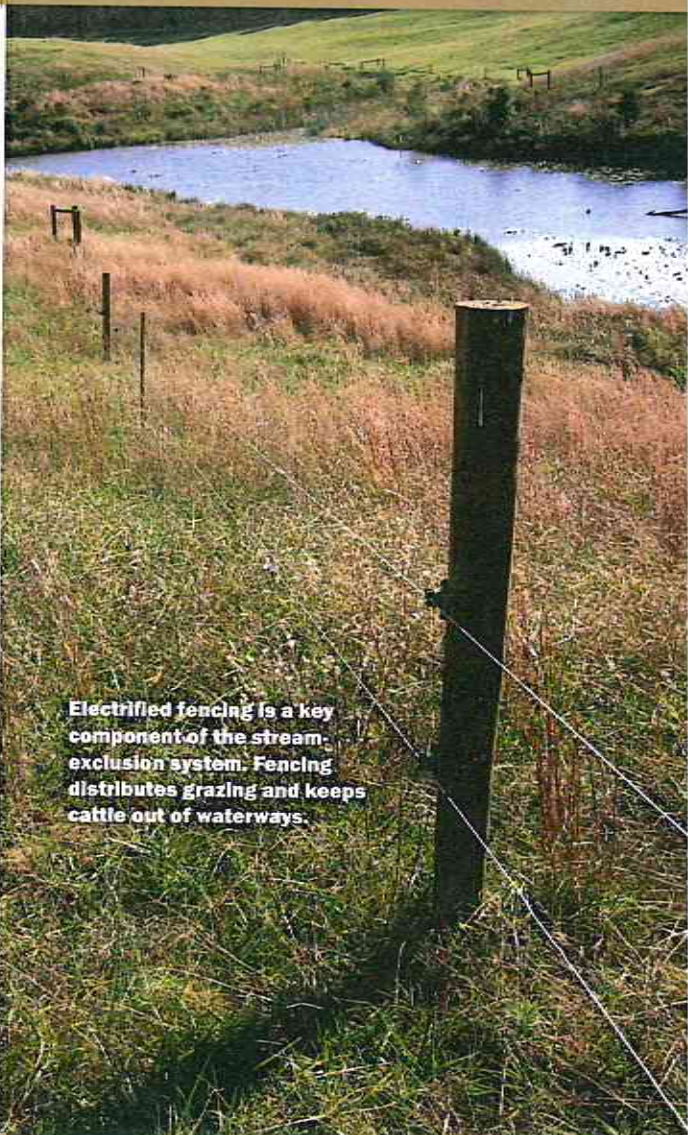
Virginia's agricultural cost-share program has helped you watch your bottom line and conserve resources for nearly three decades. By defraying the cost of installing best management practices, the program also enables you to do your share to protect water quality.

Now through June 30, 2015, you have the opportunity to sign up for unique cost-share funding for the practice of stream exclusion. Farmers who meet all criteria will be reimbursed **100 percent** for installing stream-exclusion systems on pastureland.

## Why stream exclusion?

You can increase productivity and profitability with stream exclusion. Benefits can include weight gain and fewer outbreaks of disease among cattle, greater forage production, and better pasture management and pasture quality.

Also, keeping livestock out of local waters is critical to reducing bacteria levels and excess nitrogen that pollute many rivers and streams. Through this cost-share funding, stream exclusion remains a high-priority practice.



Electrified fencing is a key component of the stream-exclusion system. Fencing distributes grazing and keeps cattle out of waterways.



Funding is available for alternative watering systems that give animals access to clean water without compromising nearby lakes or streams.